

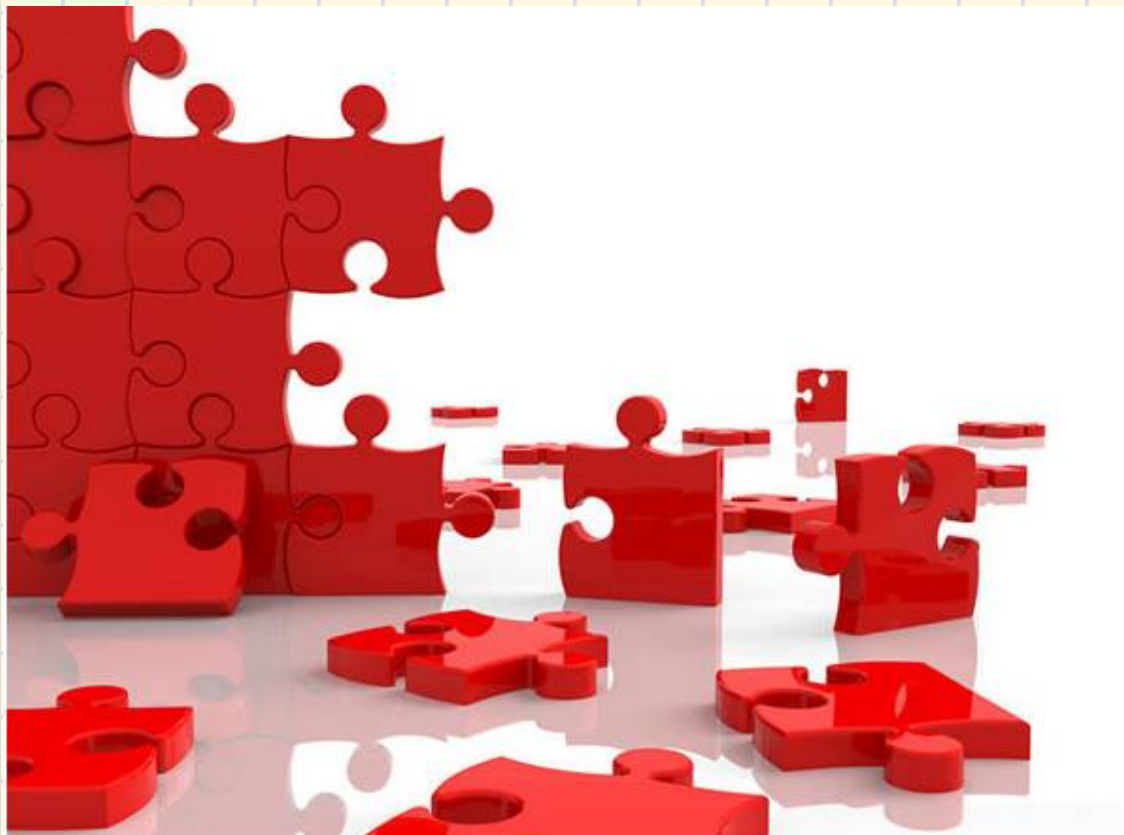
Company profile

Egretcom co.,Ltd

<http://www.egretcom.com/>

2013 Jan. 1 revised





Egretcom 
アイデアを形に。

<http://www.egretcom.com>



Overview of Egretcom

- Established : June 1 2009
- Headquarter : Tokyo Japan
- Capital : 3MYen
- Founder & CEO : Mikio Mizutani
- Number of employees: 7
- Products & services
 - # PLC application System
 - # Design of Communication Device
PLC-modem, Facsimile-modem etc
 - # MATLAB software development
 - # Communication System Consultation



Egretcom Product-1

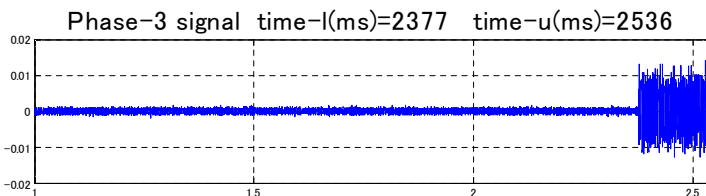
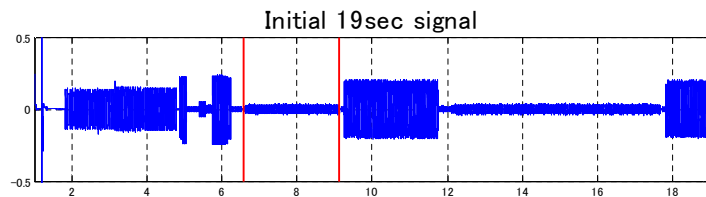
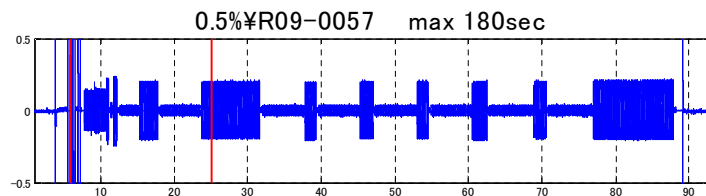
Fault analysis service of Fax transmission

#V.34 H Protocol dump

#Signal over VoIP Packet-loss analysis

Request of other options is ordered.

Interface data format: Wave format sound file



```
-----
file name=0.5%¥R09_0062
time= 4544 maxamp=6642
time= 2585 maxamp=1304
time= 2830 maxamp=6730
mphl=33600 bps
mphh=26400 bps
h1r:i=0CD6:FFA0
h2r:i=F488:0222
h3r:i=09F4:FCB2
cdatal=NSS,
cdatah=NSF,DIS,CFR,
time= 6015 maxamp=1451
time= 2006 maxamp=6641
mphl=0
mphh=0
cdatal=PPS-MPS,
cdatah=PPR,
time= 6041 maxamp=1549
time= 2478 maxamp=6647
mphl=26400 bps
mphh=26400 bps
-----
h1r:i=0CD6:FFA0
h2r:i=F488:0222
h3r:i=09F4:FCB2
cdatal=PPS-MPS,
cdatah=PPR,
time= 6031 maxamp=1463
time= 1858 maxamp=6700
mphl=0
mphh=0
cdatal=PPS-MPS,
cdatah=PPR,
time= 6031 maxamp=1528
time= 10035 maxamp=32743
mphl=0
mphh=0
cdatal=PPS-MPS,
cdatah=
-----
```



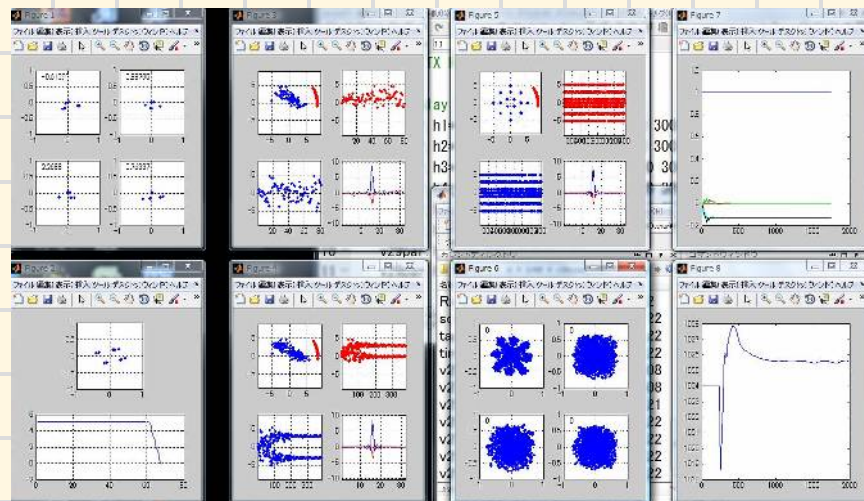
Egretcom Product-2

Software modem of FAX over VoIP

Product Announcement

Persistent modem against VoIP packet loss.

Processor depend C&assembler



Egretcom 

Egretcom Product-3

- **PLC built-in Power Measurement Device
“EG-001”**

2011 2nd Q available

**# Able to use existing power line
in home/office/factory,etc.**

**# Measures power consumption of using devices
automatically, PLC built-in power measuring
system collecting data by using highly reliable
HD-PLC**

Easy set-up... Easily add to network system

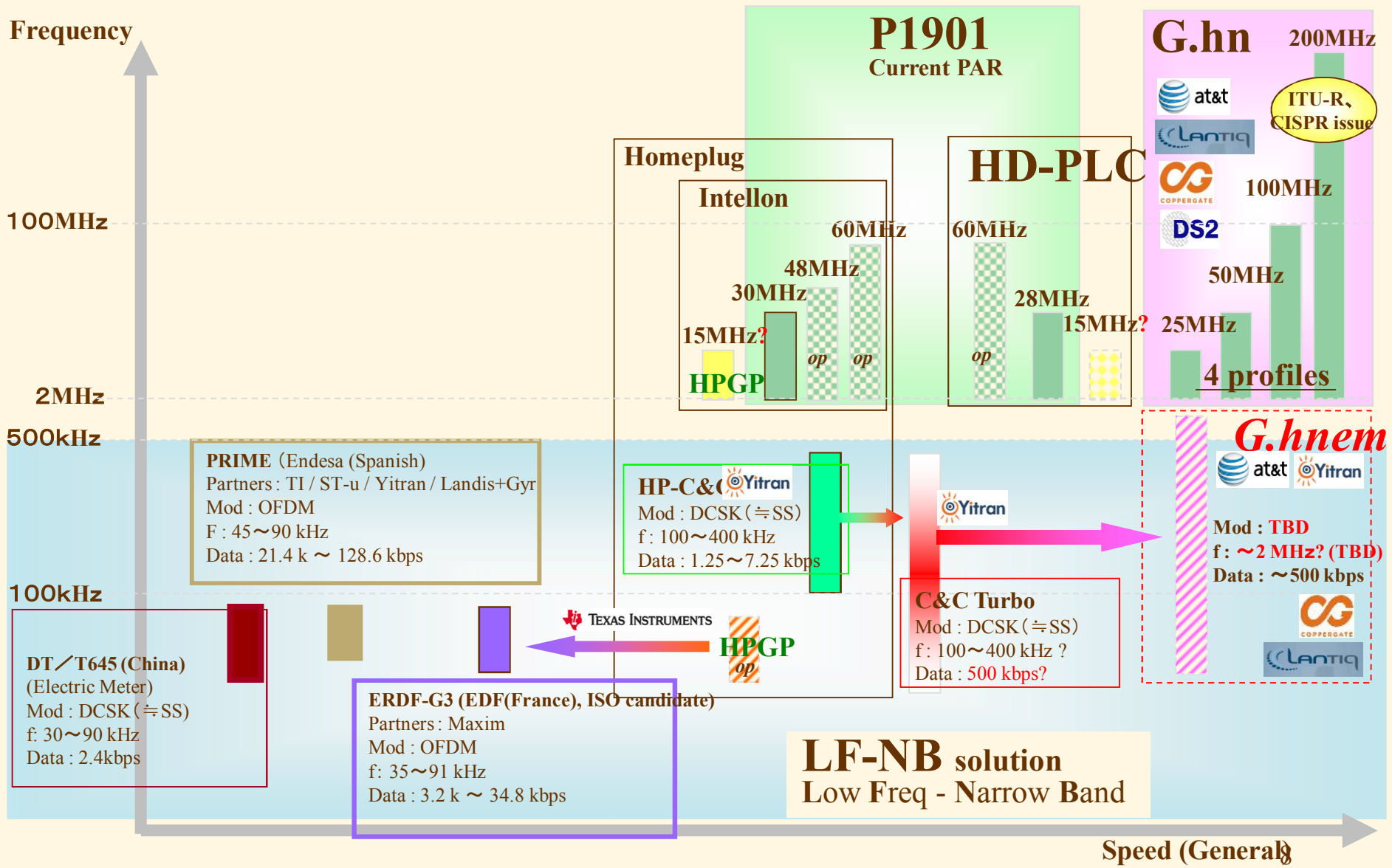


Low frequency PLC modem standard?

Country	Body/Maker	Modulation	Freq.Band/Data rate
PRIME	PRIME	OFDM	45k-90kHz
Spain	Yitran/Landis+Gyr	STm/TI	21.4k-128.6kbps
ERDF	ERDF-G3	OFDM	35k-91kHz
France	—	—	3.2k-34.8kbps
Enel	—	—	—
Italy	Echelon	—	—
IEC	IEC61334	S-FSK	20k-100kHz
France	—	—	2.4kbps
HomePlug	HomePlug CC	DCSK	100k-400kHz
USA	—	—	1.25-7.25Kbps
—	DL/T645	DCSK=SS	—
China	—	—	2.4Kbps



HighSpeed/LowSpeed PLCs ~before P1901 Santa Monica~ Tentative



History of M. Mizutani CEO

- 1950 Feb.17** Born in Gifu-city Japan
- 1974 Mar.** B.S. in Electronics Engineering of Kyoto University
- 1978 Mar.** M.S. in Information Engineering of Tokyo University

- 1978-2002** Working in Matsushita Graphic Communication System
- 1982 Feb.** Paper accepted in ISSCC Conference “DSP for modem MN8600”
- 1983 Jun.** Release Facsimile modem “MMD9601” for sale
- 1989 Apr.** Director of System LSI Development Center
- 1998 Mar.** Member of the board of MGCS

- 2003 Jan.** Senior Managing Director of Panasonic Communications Co.,Ltd
- 2004 Oct.** CTO & Vice-president of Panasonic Communications Co.,Ltd
- 2006 Mar.** The chairman of PLC-J/ Vice-chairman of IIEEJ
- 2007 Apr.** Guest Professor of the Kyushu Institute of Technology
- 2009 Mar.** Retire the Panasonic communications Co.,Ltd

- 2009 May** Receive a prize of Contribution for ITU=AJ
- 2009 Jun.** Found Egretcom Co.,Ltd



Thank you for listening!

Egretcom Home-page

<http://www.egretcom.com/>

Email

mikio.mizutani@egretcom.com

